

# HealthInfoNet's HIE Data Enhancement Services



HealthInfoNet provides better, easier, and safer **data enhancement services** to Maine's healthcare community.

## “ End-User Testimonial

We often have patients that book appointments with us within 24 hours. Having HealthInfoNet helps us obtain **real-time information** about those patients so that our providers can be **prepared and well-versed** in advance of their visits.

June Sapiel,  
Northern Light Cardiology

## Continue Learning



Contact us to schedule time to gather more information or receive a demonstration:  
[general@hinfonet.org](mailto:general@hinfonet.org)



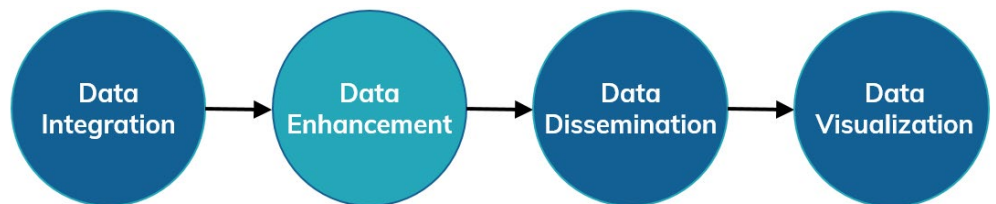
Visit our HealthInfoNet Academy online learning platform for video-based tutorials and technical documentation:  
[www.hinfonetacademy.org](http://www.hinfonetacademy.org)



Stay informed of what's happening at HealthInfoNet by visiting our website:  
[www.hinfonet.org](http://www.hinfonet.org)

## Data Enhancement Services

Once incoming data sources have entered our data warehouse, we continue to enrich the raw inputs by processing them through a series of value-add services that strengthen their accuracy and reliability for wide-ranging downstream use cases.



## Terminology Management

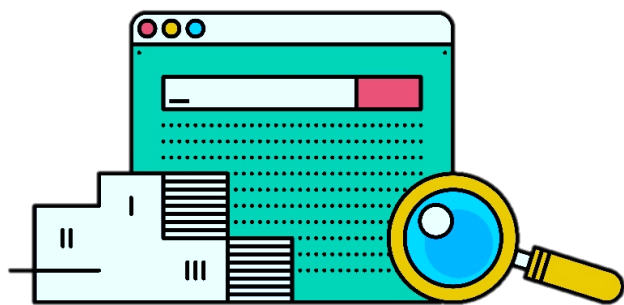
Translating local coding norms into industry-standard values (e.g., ICD, CPT, HCPCS, LOINC, SNOMED, etc.) and flagging value sets of interest to block or sequester to ensure the delivery of consistent, easily understood, and highly secure data sets.

## Person Identity Management

Tracking individuals – and their clinical, claims, community, and other critical information – across data sources and over time using probabilistic and deterministic matching measures to ensure that records are as comprehensive, consolidated, and up-to-date as possible.

## Data Linkage & Attribution

Establishing relationships between individuals and specific healthcare providers and/or location, community-based organizations, payers, and/or other entities and programs of interest to ensure more actionable downstream reporting and follow-on efforts.



Powered by  **cureous**  
INNOVATIONS™

## Terminology Management

To identify key medical concepts, EHR, laboratory, billing, and other source systems often use local values rather than industry-standard vocabularies. From a data quality perspective this presents a significant problem, as non-standard data can be difficult, if not impossible, to query, retrieve, and display in downstream use cases.

### Local-to-Industry Code Mapping

Cross-references local codes and descriptions specific to source systems to industry-standard values in accordance with ICD, CPT, HCPCS, LOINC, SNOMED, and other steward vocabularies.

### Sensitive Information Blocking

A configurable system designed to flag data that needs to be managed separately to satisfy special data management requirements, such as blocking or sequestering sensitive information.

## Person Identity Management

One of the key reasons why health information exchange systems are so powerful is because of the sophistication and robustness of their patient identity management systems.

- » Tracks individual patients – and their critical health information – across disparate data sources, among different healthcare locations, and over time.
- » Constructs probabilistic and deterministic matching measures to identify records that belong together, even if a patient's information changes.
- » Compares, searches, matches, and links patients' records to ensure that their health records are as complete, comprehensive, and up-to-date as possible.



## Data Linkage & Attribution Procedures

The integration of diverse data sources allows our systems to build unique data sets enabling the identification and stratification of populations to better coordinate care across varied settings.

### Data Linkage Procedures

Combines clinical data with other critical data sources to create a resource that enables healthcare providers to be even more confident in their operational workflows and decision-making abilities.

### Attribution Procedures

Establishes relationships between individuals and their treating providers, community-based supports, health insurance payer(s), and/or other entities and programs to allow for more actionable care planning across settings.