

# HealthInfoNet's HIE Data Visualization Services



HealthInfoNet provides better, easier, and safer **data visualization services** to Maine's healthcare community.

## “ End-User Testimonial

Data on population health is essential for public health. **Accurate reporting** of health data is at the core of successful public health programs. Without the data, public health will not succeed. HealthInfoNet supports that mission through their **automated reporting efforts**.

Stephen Sears, MD,  
Chief of Staff VA Maine; former  
Maine State Epidemiologist

## Continue Learning



Contact us to schedule time to gather more information or receive a demonstration:  
[general@hinfonet.org](mailto:general@hinfonet.org)



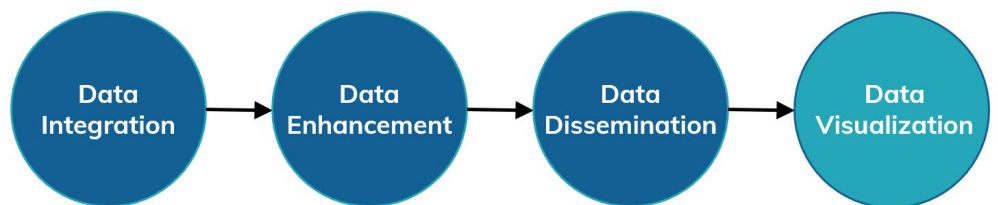
Visit our HealthInfoNet Academy online learning platform for video-based tutorials and technical documentation:  
[www.hinfonetacademy.org](http://www.hinfonetacademy.org)



Stay informed of what's happening at HealthInfoNet by visiting our website:  
[www.hinfonet.org](http://www.hinfonet.org)

## Data Visualization Services

Our cutting-edge analytic and reporting applications enable comprehensive views of care delivery across healthcare settings so that our customers can study the health and performance of targeted patient populations to inform important decision-making.



## Analytics & Reporting Platform

Producing use-case driven analytics and reporting that allow customers to dynamically and interactively view both aggregate and detailed information on their attributed populations to compare actual-to-target performance for key performance indicators, identify individuals most at risk for future inpatient admissions/readmissions and emergency visits/returns, and coordinate population- and individual-centric care accordingly.

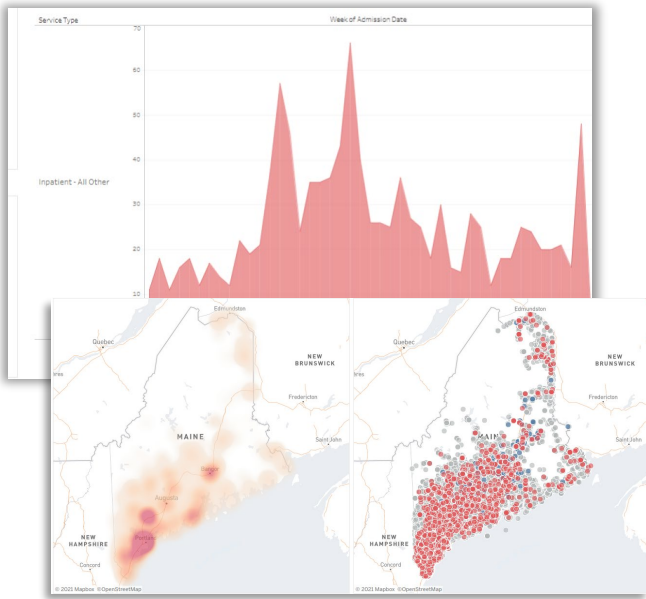
## Data Transmission Methods

Creating custom and standard options for delivering raw (e.g., real-time ADT transactions) and/or enhanced (e.g., comprehensive/limited data extracts) data sets according to project specifications and HIE data governance permissions.

## Public Health Reporting

Automating the delivery of real-time alert notifications to the Maine Centers for Disease Control and Prevention (Maine CDC) in support of hospitals' public health reporting needs, including syndromic surveillance, electronic laboratory, and immunization registry reporting efforts.





## Analytic & Reporting Platform

Our team of analysts produce use-case driven analytics and reporting to view both aggregate and detailed information on our customers' attributed patient populations, with key insights enabling end users to:

- » Better target care for patients with chronic diseases in order to prevent complications and hospitalizations.
- » Identify patients most at risk for future utilization in order to help them avoid unnecessary emergency department and hospital visits, tests, and procedures.
- » Identify quality measure gaps to put performance improvement plans in place quicker
- » Prevent unnecessary visits for high-cost and repeat services in order to establish lower out-of-pocket costs for patients and avoid penalties for readmissions and repeat tests and procedures.

## Data Transmission Methods

### Real-Time ADT Transactions

- » Custom patient attribution drives ADT message retrieval queries.
- » Selected ADT messages sent in real-time to customers.

### Enriched Data Extracts

- » Standard and custom data extract file formats sent daily, monthly, or quarterly depending on customer preference.
- » Custom patient attribution drives extract retrieval queries.
- » Patient demographics, encounters/visits, and value-added/analytic information specifications available.



## Public Health Reporting

### Syndromic Surveillance

Reporting events of care with chief complaints that indicate possible disease or condition that require review/intervention by the Maine CDC for public safety and health.

### e-Laboratory Reporting

Reporting laboratory results that indicate existence of any of the seventy-two diseases that require review/intervention by the Maine CDC for public safety and health.

### Immunization Reporting

Reporting all state-supplied vaccine administration data to the Maine Immunization Information System (ImmPact), as required by the Maine CDC for record keeping.

