

HealthInfoNet's HIE Data Integration Services



HealthInfoNet provides better, easier, and safer **data integration services** to Maine's healthcare community.

“ End-User Testimonial

I utilize HealthInfoNet in just about everything I do. The **real-time access** to our patients' medical information facilitates the way we deliver care better than ever before. The **hurry-up-and-wait** scenario to search for and track down records via fax is no longer necessary.

Michelle Gagnon, CNP,
Genesis Physician Services

Continue Learning



Contact us to schedule time to gather more information or receive a demonstration:
general@hinfonet.org



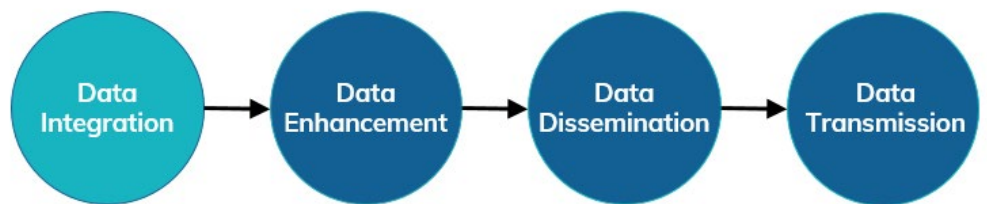
Visit our HealthInfoNet Academy online learning platform for video-based tutorials and technical documentation:
www.hinfonetacademy.org



Stay informed of what's happening at HealthInfoNet by visiting our website:
www.hinfonet.org

Data Integration Services

At the core of our data integration service is our enterprise data aggregation engine. A highly performant service that accepts, routes, maps, translates, and cleanses incoming data sets according to custom configurations in order to assure high-quality data outputs.



Clinical Data Collection

Securely connecting to healthcare locations to acquire HL7 v.2.x and CCD (via xds.b protocol) formatted clinical data sets sourced from electronic health record (EHR) systems and reference laboratories on a real-time basis.

Eligibility & Claims Data Collection

Receiving batch eligibility and claims (i.e., medical, pharmacy, and dental) data from public and private payers on a routine basis (as established by each payer's data-sharing requirements).

Community/Social Determinants Data Collection

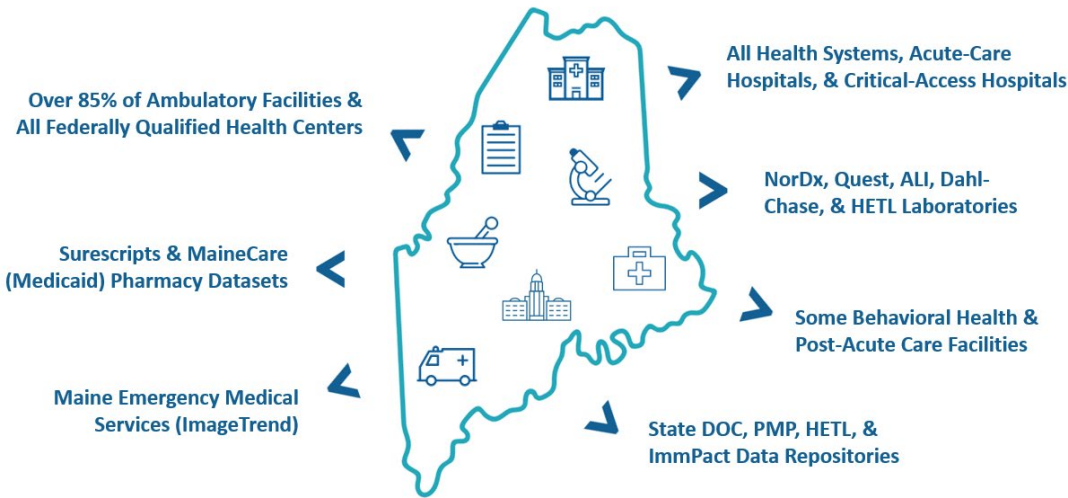
Collecting social determinants of health (SDOH) data and other community data sources from healthcare locations, community-based organizations, and social services to help build a more comprehensive picture of an individual's total health, wellness, and wellbeing.

Miscellaneous Data Collection

Consuming miscellaneous data sources according to customer needs and project specifications, including from data clearinghouse vendors such as Surescripts RxHub for pharmacy claims data.



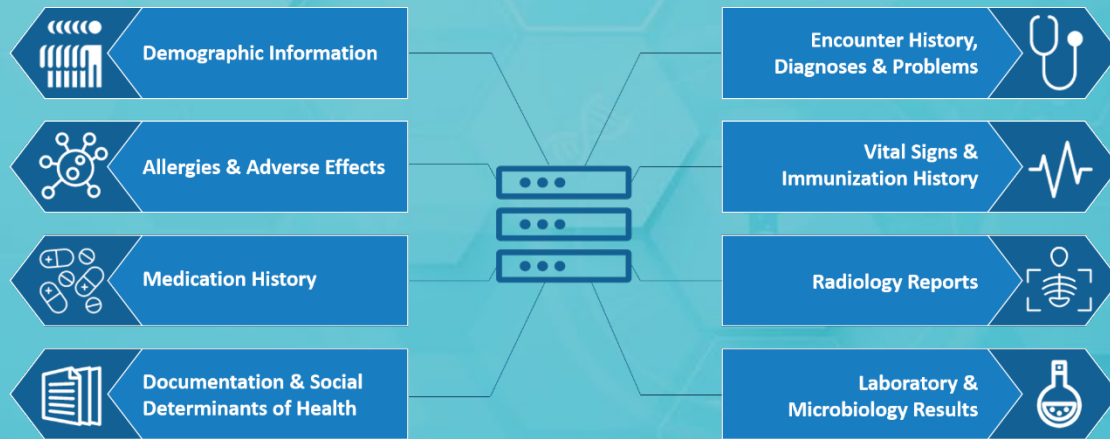
Data Connections



Connected to more than 850 healthcare locations throughout the state

Data Sources & Data Elements

Incorporating diverse data sources as new use cases emerge



Data Statistics Profile

November 2021

| | |
|-----------|--|
| 1,730,598 | Number of Patients Included in the HIE |
| 1.41% | General Medical Opt-Out Rate |
| 26,532 | Mental Health Opt-In Count |
| 61% | HIE Organization Crossover Rate* |

*Percentage of patients who visited other HIE organizations in the last 12 months.

November 2020

November 2021

HIE Participants

836



859

↑23

Patients Accessed

141,775



173,113

↑22%

Unique Users

6,013



6,787

↑13%